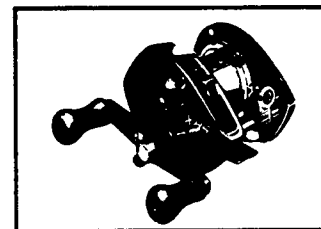
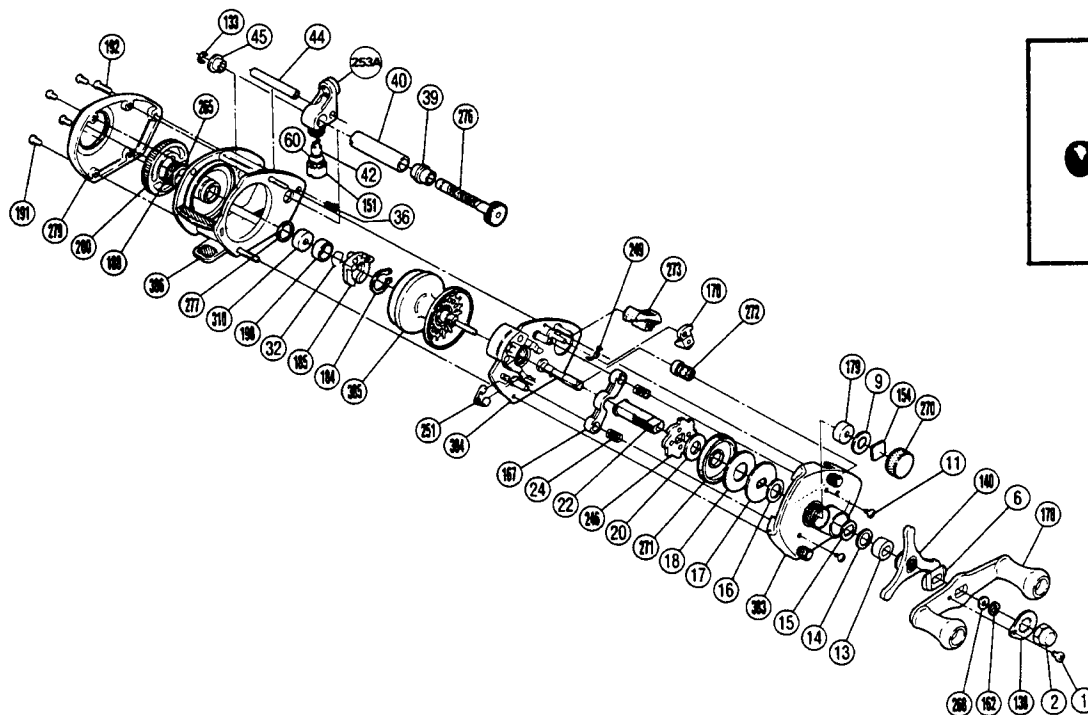


SHIMANO®

BANTAM MAG PLUS™ 15X80



EXPLODED PARTS VIEW

PARTS LIST

TO ORDER:
Original Key # and Original Code # are for cross-reference only. Please order parts using the Part # column and the prefix "BNT" which indicates the Bantam reel series.

PART #	ORIGINAL KEY #	ORIGINAL CODE #	DESCRIPTION	PART #	ORIGINAL KEY #	ORIGINAL CODE #	DESCRIPTION
1.	1.	7-0014 3010	Handle Nut Plate Screw	384.	31.	6-1809 0607	Set Plate Assembly
2.	2.	7-2123 0610	Handle Nut	251.	32.	7-1821 0637	Retractor Spring
138.	3.	7-2124 0600	Handle Nut Plate	385.	33.	7-1701 0607	Spool Assembly
162.	4.	7-1861 0610	Drive Shaft Retainer	184.	34.	7-0040 5070	Magnet Retainer Lock
268.	5.	7-2101 0610	Drive Shaft Washer (A)	185.	35.	7-1593 0612	Magnet Retainer Assembly
178.	6.	6-2129 0602	Handle Assembly	32.	36.	7-1516 0610	Bearing Retainer
6.	7.	7-2116 0610	Friction Washer (A)	198.	37.	7-1599 0612	Bearing Spacer
140.	8.	6-2119 0600	Star Drag Assembly	310.	38.	7-1517 0600	Bushing (C)
13.	9.	7-2113 0610	Bushing (B)	277.	39.	7-1515 0637	Spacer (B)
14.	10.	7-2111 0610	Friction Washer (B)	276.	40.	6-1609 0613	Worm Shaft Assembly
15.	11.	7-2112 0610	Drag Spring Washer	39.	41.	7-1605 0610	Worm Bearing (A)
11.	12.	7-0013 0050	Set Plate Screw	40.	42.	7-1606 0610	Level Wind Guard
270.	13.	7-2010 0603	Cast Control Cap	253A.	43.	6-1619 0603	Line Guide Assembly
9.	14.	7-2060 0610	Spacer (A)	42.	44.	7-1611 0610	Line Guide Pawl
154.	15.	7-2052 0600	Felt Washer	60.	45.	7-1431 0610	Line Guide Pawl Washer (Optional)
179.	16.	7-2051 0602	Bushing (A)	151.	46.	7-1612 0600	Pawl Cap
383.	17.	6-2019 0607	Right Side Plate Assembly	44.	47.	7-1607 0610	Stabilizer Bar
16.	18.	7-2110 0610	Friction Washer (C)	45.	48.	7-1601 0610	Worm Bearing (B)
17.	19.	7-2108 0610	Key Washer	133.	49.	7-1618 0600	Worm Shaft Retainer
18.	20.	7-2107 0610	Drag Washer	386.	50.	6-1509 0607	Frame Assembly
271.	21.	7-2106 0613	Drive Gear	265.	51.	7-0020 9030	Thrust Washer Spacer (Optional)
20.	22.	7-2105 0610	Drive Shaft Washer (B)	188.	52.	7-2005 0610	O Ring
246.	23.	7-2103 0637	Anti-Reverse Ratchet	200.	53.	7-1442 0611	Magnetic Control Dial
22.	24.	7-2102 0610	Drive Shaft	279.	54.	7-1401 0603	Left Side Plate
24.	25.	7-1817 0610	Yoke Spring	191.	55.	7-0013 0040	Left Side Plate Screw
167.	26.	7-1816 0631	Yoke	192.	56.	7-0013 0060	Left Stabilizer Bar Screw
272.	27.	6-1729 0613	Pinion Gear Assembly	36.	57.	7-0012 0010	Right Stabilizer Bar Screw
170.	28.	7-1824 0631	Anti-Reverse Pawl Assembly				
273.	29.	7-1850 0613	Anti-Reverse Switch				
249.	30.	7-1852 0637	Anti-Reverse Switch Spring				